

Introduction to Nordplus Adult



Malene Rickmann, main administrator of Nordplus Adult
mbsr@ufm.dk
Danish Agency for Higher Education and Science

Agenda

1. Are you looking for a partner?
2. Facts about Nordplus Adult
3. Who can apply to Nordplus Adult?
4. What can you apply for in Nordplus Adult?
5. How to apply to Nordplus Adult
6. Important dates and deadlines
7. Contact details



Are you looking for a partner?

- Check out the partner search tool at nordplusonline:
 - Register your own organisation: <https://www.nordplusonline.org/how-to-apply/become-a-partner/>
 - Browse through other registered organisations: [Partner Search - Nordplus](#)
- Check out the EPALE partner search tool: <https://epale.ec.europa.eu/en/partner-search>
- You are also welcome to exchange contact details in the chat

Facts about Nordplus Adult...

- A sector-specific sub-programme that supports educational cooperation in the Nordic and Baltic countries
- Has two annual application rounds: 3 February 2025 for all types of activities and 1 October 2025 for preparatory visits
- Has a limited budget of app. 1.2 million € per year
- Operates with fixed unit costs for all activities – some degree of self-financing must be expected, but not documented.
- Supports mobility and collaboration projects

Who can apply to Nordplus Adult?

- Open to all types of organizations engaged in the field of adult learning – e.g.:
 - Formal adult education institutions
 - Universities and university colleges and other HE institutions if the initiative targets adult education/CVET – upskilling and reskilling of all professional groups
 - Other organisations, including associations, public authorities, businesses, cultural institutions and non-governmental organisations working with adult education and adult learning in informal and non-formal settings, e.g.
 - Folk high schools, libraries, museums, evening schools, third age universities, NGOs

Who can apply to Nordplus Adult?

Very broad target group, but....

the initiative must address education and learning directed at “adult learners” and/or “adult educators”.

Adult learners/adult educators must benefit from the project



What can you apply for in Nordplus Adult?

Mobility activities:

- Preparatory visits (in February and October calls)
- Exchange of adult teachers and other adult education staff
- Exchange of adult learners

Collaboration projects:

- Thematic networks
- Mapping projects
- Development projects



Mobility activities – min. 2 partners from 2 countries

1. Preparatory visits

- An opportunity for new partnerships to meet and plan future collaboration – e.g. write an application, visit each other
- Grants for travel and subsistence
- Max 5 days, including travel days, max. 2 participants per organisation
- One organisation is host and receives no grant

TRAVEL UNIT COSTS (PER PARTICIPANT, ROUND-TRIP)

To and from Greenland	1.300 €
To and from the Faroe Islands and Iceland	660 €
Between Denmark, Estonia, Finland, Latvia, Lithuania, Norway, Sweden and Åland	330 €
*Domestic, more than 500 km (round-trip)	175 €

SUBSISTENCE UNIT COSTS (PER PARTICIPANT)

TYPE OF PARTICIPANT	PER DAY	PER WEEK	PER MONTH
Adult learners (students)	70 €	250 €	750 €
Teachers and other pedagogical staff	100 €	500 €	1.350 €

The grant for subsistence is designed to cover the whole stay, including travel days (usually, two travel days).

Mobility activities – min. 2 partners from 2 countries

2. Exchange of teachers and other adult education staff

- Participants must be responsible for the education of adult learners, e.g. adult educators/teachers, trainers, counsellors, managers etc.
- Job-shadowing, courses, study- and training stays, teaching assignments
- Duration: 3 days to 2 years (travel days excluded)
- Grants for travel, subsistence and project management

Mobility activities – min. 2 partners from 2 countries

3. Exchange of adult learners

- All kinds of adult learners can participate
- Individual stays, group stays
- The stay must be organised as an exchange in an educational institution and/or a work placement in a company, where adult learners take part in learning activities in the host organisation together with learners from the host country
- Duration: 3 days to 2 years (travel days excluded)
- Grants for travel, subsistence and project management

Example: Mobility of adult learners

Partners: Folk High Schools from Denmark and Estonia

Grant: 39.580 EUR

Activities:

3 long-term students from Estonia in Denmark for 11 months

4 short-term students from Estonia in Denmark for 1 week

7 short-term students from Denmark in Estonia for 1 week

1 accompanying teacher from Estonia in Denmark for 1 week

1 accompanying teacher from Denmark in Estonia for 1 week



Folk High School Creates Long-term Danish/Baltic Exchange Project

An awareness of one's own privileges, more democratic education for all and, last but not least, happy folk school students. These are some of the clear impressions left by the exchange project established between Mariager Folk High School and the school NextStep Piiblikool.

Read more about the project in our article: https://www.nordplusonline.org/project_articles/folk-school-creates-long-term-danish-baltic-exchange-project/



Funding mobility projects – teachers and learners

- Grants for travel and subsistence
- Grant for project management if the project meets the criteria

The following criteria must be met in order to be eligible for a project management grant:

- The mobility project must be of the type "Exchange of teachers and other pedagogical staff" or "Exchange of adult learners (adult students)". Preparatory visits are not eligible for this grant.
- The applied grant for travel and subsistence must be minimum 10.000 €, or the number of traveling participants must be minimum 15.

RATE PER PARTICIPATING INSTITUTION FOR PROJECT MANAGEMENT

Coordinator:	2.000 €
Partner:	1.000 €

TRAVEL UNIT COSTS (PER PARTICIPANT, ROUND-TRIP)

To and from Greenland	1.300 €
To and from the Faroe Islands and Iceland	660 €
Between Denmark, Estonia, Finland, Latvia, Lithuania, Norway, Sweden and Åland	330 €
*Domestic, more than 500 km (round-trip)	175 €

SUBSISTENCE UNIT COSTS (PER PARTICIPANT)

TYPE OF PARTICIPANT	PER DAY	PER WEEK	PER MONTH
Adult learners (students)	70 €	250 €	750 €
Teachers and other pedagogical staff	100 €	500 €	1.350 €

The grant for subsistence is designed to cover the whole stay, including travel days (usually, two travel days).

Inclusion support – for all types of projects

- Adult learners and staff who require inclusion support due to mental or physical disabilities can apply for additional funds. These expenses can be approved with up to 100% of real costs if these costs are not covered through other sources.
- At application time, it is possible to apply for known real costs related to inclusion needs directly in the application form.
- If the need for additional funds related to inclusion support arises during the project period, this may be applied for outside the ordinary application round.
- Examples of inclusion support include expenses for an accompanying person, interpreter, single room, local transportation or similar.
- Real costs must be documented in the final report.



Collaboration projects – new limit on number of applications per organisation per deadline

- From 2025, the same organisation can be involved in maximum **two applications** for Nordplus Adult **collaboration projects** (i.e. thematic networks, development projects, mapping projects) as coordinator and/or partner **per deadline**.
- If an organisation is involved in more than two applications as coordinator and/or partner for Nordplus Adult collaboration projects for the same deadline, the first two submitted applications will be evaluated, and the rest of the applications involving the organisation will be assessed as ineligible.
- The coordinator is responsible for checking that the partnership complies with the limit on submitted number of applications per organisation for Nordplus Adult collaboration projects.
- This limit only applies to Nordplus Adult collaboration applications, i.e. the limit does not apply to Nordplus Adult mobility applications or to applications submitted to the other Nordplus sub-programmes.



Collaboration projects – min. 3 partners from 3 countries

1. Thematic networks

- Collaboration about a topic of common interest within adult education and learning – e.g. motivation, integration of adult learners with immigrant background, media literacy, democratic participation etc.
- Grants for project meetings (travel/subsistence) and project management
- Max duration: 2 years

RATE PER PARTICIPATING INSTITUTION FOR PROJECT MANAGEMENT

Coordinator:	4.000 €
Partner:	2.000 €

UNIT COST PER PARTICIPANT PER TRANSNATIONAL MEETING (ROUND-TRIP)

To and from Greenland	1.600 €
To and from the Faroe Islands and Iceland	960 €
Between Denmark, Estonia, Finland, Latvia, Lithuania, Norway, Sweden and Åland	630 €
*Domestic, more than 500 km (round-trip)	175 €
**Domestic travel and subsistence, more than 500 km (round-trip)	475 €

Example: Thematic network

Topic: Local food production

Participating countries: Lithuania, Denmark, Norway, Iceland

Grant: 44.160 EUR

Activities: 4 transnational project meetings, one in each country



Frontrunners in local food production create a bridge between culture and tradition

Food with a short journey from field to table is in demand by consumers in both the Nordics and the Baltics. This led food producers in Lithuania, Iceland, Norway and Denmark to come together in a Nordplus Adult project with a focus on learning from each other – both in relation to production and to sales.

Read more about the project in our article: https://www.nordplusonline.org/project_articles/frontrunners-in-local-food-production-create-a-bridge-between-culture-and-tradition/



Collaboration projects – min. 3 partners from 3 countries

Mapping projects

- The aim of mapping projects is to take stock, define development needs, make recommendations for future initiatives, and hereby create the basis for new projects
- Mapping projects must present their results to the wider public, e.g. produce reports, analyses, tools etc. A “product” is a requirement.
- Grants for project meetings (travel/subsistence), project management and development work (= salaries)
- Max duration: 2 years

Example: Mapping project

Partnership: 11 university colleges from NO, DK, SE, FI and IS

Topic: Mapping of training needs of Nordic nurses (CVET)

Product and activities: Development of a mapping tool and a longitudinal study on training needs of Nordic nurses, 4 project meetings

Awarded grant: 73.425 EUR



Collaboration projects – min. 3 partners from 3 countries

4. Development projects

- Development projects must lead to the development of one or more “products”, e.g. new teaching material, (online) courses, modules, methods, platforms etc.
- The products must be made freely available to external users when the project period ends
- Grants for projects meetings (travel/subsistence), project management and development work (= salaries)
- Max duration 2 years

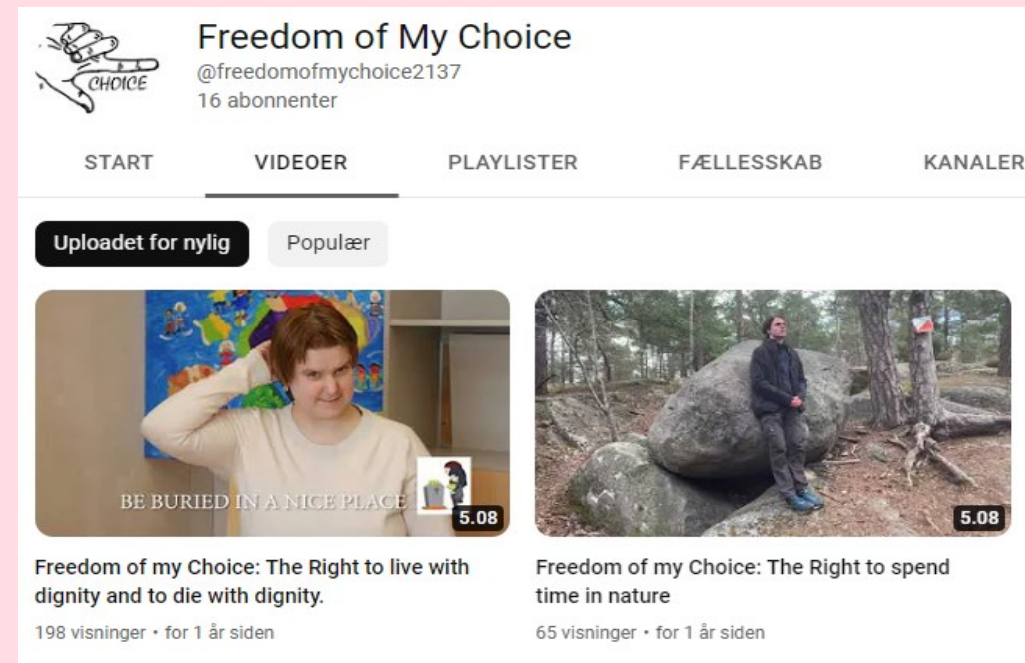
Example: Development project

Partnership: Organisations from LT, LV, EE, IS and SE

Topic: Human rights taught to mentally disabled adult learners

Product and activities: 20 videos about different human and civil rights,
5 transnational project meetings

Awarded grant: 34.630 EUR



Funding – mapping- and development projects

- Grant for project management (lump sum)
- Transnational project meetings (travel/subsistence in one unit cost)
- Development work (contribution to salaries for development of products)

RATE PER PARTICIPATING INSTITUTION FOR PROJECT MANAGEMENT

Coordinator:	4.000 €
Partner:	2.000 €

UNIT COST PER PARTICIPANT PER DAY FOR DEVELOPMENT WORK

Baltic countries	125 €
Nordic countries	250 €

UNIT COST PER PARTICIPANT PER TRANSNATIONAL MEETING (ROUND-TRIP)

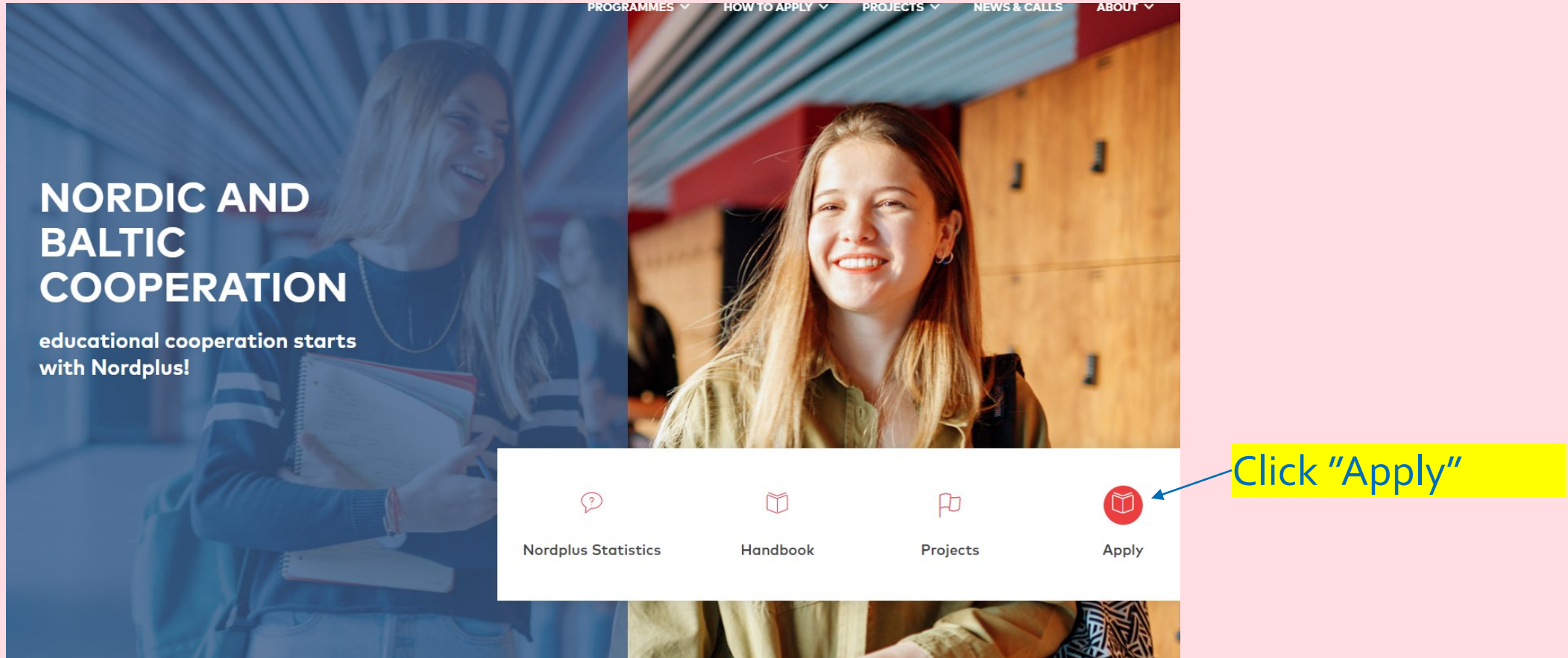
To and from Greenland	1.600 €
To and from the Faroe Islands and Iceland	960 €
Between Denmark, Estonia, Finland, Latvia, Lithuania, Norway, Sweden and Åland	630 €
*Domestic, more than 500 km (round-trip)	175 €
**Domestic travel and subsistence, more than 500 km (round-trip)	475 €

How to apply to Nordplus Adult

- Applications must be submitted electronically through the system Espresso
- You find Espresso on our website www.nordplusonline.org – click the button "Apply"
- Here is a direct link to Espresso:
<https://espresso.diku.no/espresso/login?1>
- You must create a user account in order to access the application forms – click "Register new user"
- The application form is available in English and Danish
- The application can be written in English, Danish, Norwegian or Swedish

How to apply to Nordplus Adult

Go to www.nordplusonline.org and click "Apply"



How to apply to Nordplus Adult

Create a user account or log into your account

Norwegian Directorate for Higher Education and Skills

Espresso
Application and Reporting

Login

Login

Please log in with user name (e-mail address) and password

If you have previously used HK-dir's online services, you can use the same user name and password as before.

If you experience technical problems with registration or login, please use our [support](#) page.

Username

Password

Login

Register new user

Forgot password

Click "Register new user" if you do not have an account

How to apply to Nordplus Adult



Available application forms

This section lists available application forms for this programme.

Nordplus Adult 2025

This application form is available between **Nov 1, 2024 9:00 AM** and **Feb 3, 2025 11:59 PM**.
Use the link below to create a new application, or continue working with an existing application under "My Applications".
The call for application may be found [here](#).

[Click here to create a new application](#)

Nordplus Higher Education 2025

This application form is available between **Nov 1, 2024 9:00 AM** and **Feb 3, 2025 11:59 PM**.
Use the link below to create a new application, or continue working with an existing application under "My Applications".
The call for application may be found [here](#).

[Click here to create a new application](#)

Nordplus Horizontal 2025

This application form is available between **Nov 1, 2024 9:00 AM** and **Feb 3, 2025 11:59 PM**.
Use the link below to create a new application, or continue working with an existing application under "My Applications".
The call for application may be found [here](#).

[Click here to create a new application](#)

Nordplus Nordic languages 2025

This application form is available between **Nov 1, 2024 9:00 AM** and **Feb 3, 2025 11:59 PM**.
Use the link below to create a new application, or continue working with an existing application under "My Applications".
The call for application may be found [here](#).

[Click here to create a new application](#)

Nordplus Junior 2025


This application form is available between **Nov 1, 2024 9:00 AM** and **Feb 3, 2025 11:59 PM**.
Use the link below to create a new application, or continue working with an existing application under "My Applications".
The call for application may be found [here](#).

[Click here to create a new application](#)

It is important to apply to the correct Nordplus sub-programme. Applications that are submitted to the wrong programme will be rejected. If you are in doubt about the correct programme, you are welcome to contact us.




How to apply to Nordplus Adult



Norwegian Directorate
for Higher Education
and Skills

Espresso

Application and Reporting



malene@rickmann.dk

Help My account Logout

Login > Nordplus > Document editor

Nordplus Adult - Application 2025
NPAD-2025/10008 - Untitled project

1. Start

2. Institutions

3. General info.

4. Project description

6. Budget

7. Check list

8. Submit

Basic information

..... 1.1. Project information

Give your project/application a name

Name of project *

Untitled project

Project number

NPAD-2025/10008

..... 1.2. Project access

Here you can choose who will have access to the application. The person who is allowed access to the application needs to register/create an account in Espresso. Following the registration you can choose the person from the list of registered users.

Editor access

Editor access means that the person you give access can make changes in the application.

Search for user by email address

Search

Important dates and deadlines

Next Nordplus Café "Tips and tricks for your application": 9 January, 13:00-14:30 CET. Register here: [Nordplus Café January 9, 2025 13-14.30 CET: Undersökningen genomförs via Webropol](#)

Application deadline: 3 February 2025, 23:59 CET

Answer to application: During the first week of May

Contracts during May and payment within 45 days upon receipt of signed contract

Contact details

Each Nordplus country has its own Nordplus office, where you can get information in your own language. Find the list of Nordplus offices here:

<https://www.nordplusonline.org/about/contact/>

Nordplus Adult main administrator:

Danish Agency for Higher Education and Science

Malene Rickmann

E-mail: mbsr@ufm.dk

Tel.: +45 72 32 89 27